

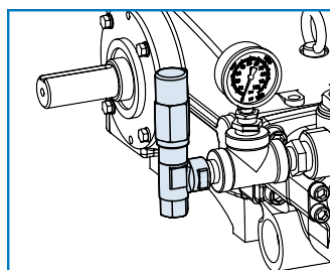
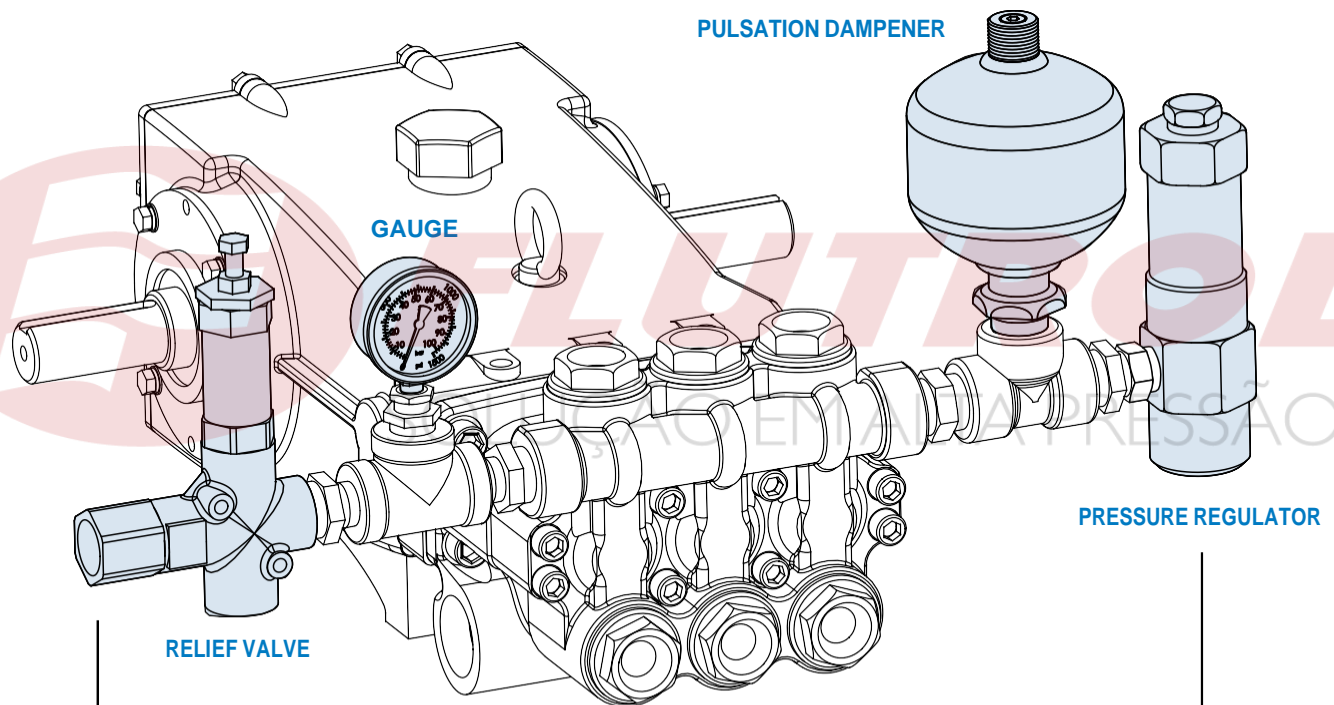
ACCESSORIES

Pump Outlet Controls

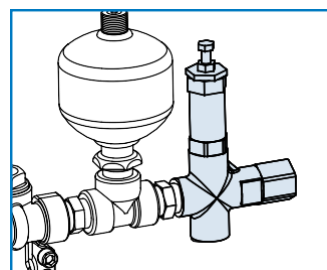


Cat Pumps offers a wide range of quality accessories. Adhering to the same exacting standards as our pumps, all accessories are performance-tested and designed to match each pump's unique specifications. By demanding genuine Cat Pumps products, you receive the best value and lowest life-cost over the life of the system.

To ensure the very best system life-cycle, Cat Pumps recommends a primary regulating device, secondary pressure relief device, and outlet pressure gauge. Pulsation dampeners and downstream chemical injection pulse pumps can also be found in this brochure. Whatever the need, Cat Pumps has a selection of proven accessories to compliment your pump investment.



Pop-Off Valve



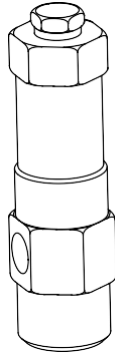
Unloader

Be the best-in class and realize low life cycle costs –
Choose pumps and accessories from Cat Pumps!

Pressure Regulators

Used when consistent pressure accuracy is required.

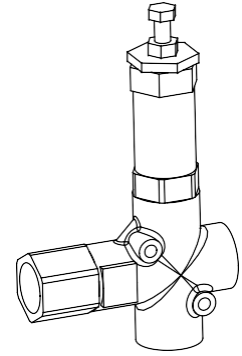
- Typically, used for multiple pump, nozzle and gun applications.
- Conical design lowers minimum required by-pass flow and eliminates cavitation effects extending performance life.



Unloaders

Typically, used with trigger gun applications.

- Reduces load on pump and motor when in by-pass.
- Wide pressure and flow range models available.



Model	FLOW RANGE gpm/lpm	PRESSURE RANGE psi/bar	PORTS	
			Inlet/Discharge	By-Pass

STEEL/NICKEL PLATED (All models are Flow-Thru design with conical piston and seat)

7001	0.5-5/1.9-19	100-1000/7-700	3/8" NPTF	1/2" NPTF
7002	0.5-5/1.9-19	500-2000/35-140	3/8" NPTF	1/2" NPTF
7003	0.5-5/1.9-19	1500-3000/105-210	3/8" NPTF	1/2" NPTF
7011	1.0-10/3.8-38	100-1000/7-700	1/2" NPTF	3/4" NPTF
7012	1.0-10/3.8-38	500-2000/35-140	1/2" NPTF	3/4" NPTF
7013	1.0-10/3.8-38	1500-3000/105-210	1/2" NPTF	3/4" NPTF
7014	1.0-10/3.8-38	2000-4000/140-275	1/2" NPTF	3/4" NPTF
7021	2.5-25/9.5-95	100-1000/7-700	3/4" NPTF	1" NPTF
7022	2.5-25/9.5-95	500-2000/35-140	3/4" NPTF	1" NPTF
7023	2.5-25/9.5-95	1500-3000/105-210	3/4" NPTF	1" NPTF
7024	2.5-25/9.5-95	2000-4000/140-275	3/4" NPTF	1" NPTF
7031	3.5-35/13.2-132	250-1000/18-70	3/4" NPTF	1" NPTF
7032	3.5-35/13.2-132	1000-2000/70-140	3/4" NPTF	1" NPTF
7033	3.5-35/13.2-132	1500-3000/105-210	3/4" NPTF	1" NPTF

STAINLESS STEEL (All models are Flow-Thru design with conical piston and seat)

7001.100	0.5-5/1.9-19	100-1000/7-700	3/8" NPTF	1/2" NPTF
7002.100	0.5-5/1.9-19	500-2000/35-140	3/8" NPTF	1/2" NPTF
7003.100	0.5-5/1.9-19	1500-3000/105-210	3/8" NPTF	1/2" NPTF
7011.100	1.0-10/3.8-38	100-1000/7-700	1/2" NPTF	3/4" NPTF
7012.100	1.0-10/3.8-38	500-2000/35-140	1/2" NPTF	3/4" NPTF
7013.100	1.0-10/3.8-38	1500-3000/105-210	1/2" NPTF	3/4" NPTF
7014.100	1.0-10/3.8-38	2000-4000/140-275	1/2" NPTF	3/4" NPTF
7021.100	2.5-25/9.5-95	100-1000/7-700	3/4" NPTF	1" NPTF
7022.100	2.5-25/9.5-95	500-2000/35-140	3/4" NPTF	1" NPTF
7023.100	2.5-25/9.5-95	1500-3000/105-210	3/4" NPTF	1" NPTF
7024.100	2.5-25/9.5-95	2000-4000/140-275	3/4" NPTF	1" NPTF
7031.100	3.5-35/13.2-132	250-1000/18-70	3/4" NPTF	1" NPTF
7032.100	3.5-35/13.2-132	1000-2000/70-140	3/4" NPTF	1" NPTF
7033.100	3.5-35/13.2-132	1500-3000/105-210	3/4" NPTF	1" NPTF
7375	10.0-75/38-284	100-1000/7-700	1-1/4" NPTF	1-1/2" NPTF
7376	10.0-75/38-284	500-2000/35-140	1-1/4" NPTF	1-1/2" NPTF
7720	0.5-10/1.9-38	2000-10,000/138-689	1/4" NPTF	3/8" NPTF

STAINLESS STEEL (Tee mount with conical piston and seat)

7350	1.0-12/3.8-45	400-1500/28-105	1/4" NPTF/.....	3/8" NPTF
------	---------------	-----------------	-----------------	-----------

BRASS (All models are Tee mounts)

7080	2.5-7.8/9.5-29.5	150-1450/10-100	3/8"NPTF	3/8" NPTF
7082	2.5-7.8/9.5-29.5	850-3575/59-246	3/8"NPTF	3/8" NPTF
7085	1.0-3.5/3.8-13.2	205-2300/14-158	1/4"BSPM	1/8" BSPM

Model	FLOW RANGE gpm/lpm	PRESSURE RANGE psi/bar	PORTS	
			Inlet/Discharge	By-Pass

BRASS MODELS (Flow Sensitive)

7450	2.4-10/9.0-40	100-4000/7-275	3/8" NPTF	3/8" NPTF
------	---------------	----------------	-----------	-----------

BRASS MODELS (Pressure Sensitive)

7500S	0.5-6/1.89-23	100-2000/7-140	3/8" NPTM	3/8" NPTF
7600S	2.0-5/7.6-19	700-3500/49-245	3/8" NPTM	3/8" NPTF
7534	1.0-21/3.8-80	400-2200/28-155	1/2" NPTF	1/2" NPTF
7535	1.0-21/3.8-80	800-4000/55-275	1/2" NPTF	1/2" NPTF
7576	1.0-21/3.8-80	1500-7250/105-500	1/2" BSPF	1/2" BSPF
7580	0.5-6.5/1.9-25	400-1000/28-70	3/8" NPTM	3/8" NPTF
7581	0.5-6.5/1.9-25	800-2300/55-158	3/8" NPTM	3/8" NPTF
7590	10.0-52/38-200	400-2175/28-150	1" NPTF	1" NPTF
7592	10.0-52/38-200	450-2500/31-175	1" NPTF	1" NPTF
7620	0.5-7.8/1.9-29.5	100-3145/7-220	3/8" BSPM/BSPF	3/8" BSPF
7630	2.0-10.5/7.6-40	400-5100/28-350	3/8" NPTM/BSPF	1/2" NPTF
7670	2.5-8/9.5-30	150-1750/10-120	3/8" NPTF	3/8" NPTF
7672	2.5-8/9.5-30	850-3200/60-220	3/8" NPTF	3/8" NPTF
7690	2.5-8/9.5-30	1000-4050/70-280	3/8" NPTF	3/8" NPTF
7691	2.5-8/9.5-30	1000-4050/70-280	3/8" NPTF	3/8" NPTF
7730	0.5-4.5/1.9-17	100-3000/7-210	1/2" NPTF/NPTM	Built-in By-Pass
7850	0.5-6/1.9-23	100-4000/7-275	1/2" NPTF/NPTM	Built-in By-Pass
9900	50-120/189-450	100-2900/7-200	1 1/4" NPTF	1 1/2" NPTF

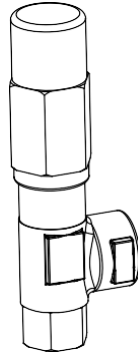
STAINLESS STEEL MODELS (Pressure Sensitive)

7501	0.5-6.0/1.9-23	100-2000/7-140	3/8" NPTM	3/8" NPTF
7531	1.0-21/3.8-80	400-2200/28-155	1/2" NPTF	1/2" NPTF
7533	1.0-21/3.8-80	800-4000/55-275	1/2" NPTF	1/2" NPTF
7536	1.0-21/3.8-80	3000-5700/210-400	1/2" NPTF	1/2" NPTF

Relief Valves

Reliable and accurate secondary backup pressure relief.

- Heavy duty, conveniently mounts directly into discharge line.
- Wide pressure and flow range models available.



Model	FLOW RANGE gpm/lpm	PRESSURE RANGE psi/bar	PORTS	
			Inlet/Discharge	By-Pass

BRASS MODELS

7190	0-6.5/0-25	400-5000/28-345	3/8" BSPF	3/8" BSPF
7196	0-21/0-80	100-7250/7-500	1/2" BSPF/----	3/8" BSPF
7500S.100	0.5-6/1.89-23	100-2000/7-140	3/8" NPTM	3/8" NPTF
7534.100	1.0-21/3.8-80	400-2200/28-155	1/2" NPTF	1/2" NPTF
7535.100	1.0-21/3.8-80	800-4000/55-275	1/2" NPTF	1/2" NPTF
7590.100	10.0-52/38-200	400-2175/28-150	1" NPTF	1" NPTF
7595	1.0-53/3.8-200	260-2600/18-180	3/4" NPTF/----	1/2" NPTF
7620.100	0.5-7.8/1.9-29.5	100-3145/7-220	3/8" BSPM/BSPF	3/8" BSPF
7630.100	2.0-10.5/7.6-40	400-5100/28-350	3/8" NPTM/BSPF	1/2" NPTF
7670.100	2.5-8/9.5-30	150-1750/10-120	3/8" NPTF	3/8" NPTF
7672.100	2.5-8/9.5-30	850-3200/60-220	3/8" NPTF	3/8" NPTF
7690.100	2.5-8/9.5-30	1000-4050/70-280	3/8" NPTF	3/8" NPTF
9900.100	50-120/189-450	100-2900/7-200	1 1/4" NPTF	1 1/2" NPTF

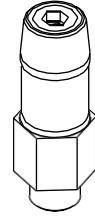
STAINLESS STEEL MODELS

7034	1.0-21/3.8-80	400-2200/28-155	1/2" NPTF	1/2" NPTF
7036	1.0-21/3.8-80	800-4000/55-275	1/2" NPTF	1/2" NPTF
7037	1.0-21/3.8-80	3000-5700/210-400	1/2" NPTF	1/2" NPTF
7501.100	0.5-6.0/1.9-23	100-2000/7-140	3/8" NPTM	3/8" NPTF
7531.100	1.0-21/3.8-80	400-2200/28-155	1/2" NPTF	1/2" NPTF
7533.100	1.0-21/3.8-80	800-4000/55-275	1/2" NPTF	1/2" NPTF
7536.100	1.0-21/3.8-80	3000-5700/210-400	1/2" NPTF	1/2" NPTF
890700	30-180/114-680	1000-3000/70-210	2" NPTF	2" NPTM
890702	25-210/95-795	500-2000/35-140	2" NPTF	2" NPTM
890704	45-320/170-1211	500-2000/35-140	2" NPTF	2" NPTM
890706	15-260/57-984	250-1000/17-210	2" NPTF	2" NPTM
890708	8.0-13.0/30-49	2500-10000/175-690	2" NPTF	2" NPTM
890709	20-60/76-227	1500-4000/105-275	2" NPTF	2" NPTM
890718	10-50/38-189	1000-8000/70-550	2" NPTF	2" NPTM

Pop-Off Valves

Economical, secondary relief protection.

- Lightweight, compact design quickly and conveniently mounts directly into discharge line.
- Competitive ultra compact models for portable systems.



Model	FLOW RANGE gpm/lpm	PRESSURE RANGE psi/bar	PORTS	
			Inlet/Discharge	By-Pass

BRASS MODELS

30960	1.0-6.0/3.8-23	300-1500/20-105	1/4" NPTM/----	3/4" Barb
30961	1.0-6.0/3.8-23	1000-3000/70-210	1/4" NPTM/----	3/4" Barb
33960	1.0-6.0/3.8-23	300-1500/20-105	3/8" NPTM/----	3/4" Barb
33961	1.0-6.0/3.8-23	1000-4000/70-275	1/4" NPTM/----	3/4" Barb
33962	1.0-6.0/3.8-23	1000-4000/70-275	3/8" NPTM/----	3/4" Barb

STAINLESS STEEL MODELS

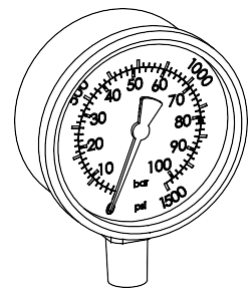
9920*	0-20/0-76	0-10000/0-690	3/8" NPTM/NPTF	NA
9960	1.0-6.0/3.8-23	300-1500/20-105	1/4" NPTM/----	3/4" Barb
9961	1.0-6.0/3.8-23	1000-3000/70-210	1/4" NPTM/----	3/4" Barb
9962	1.0-6.0/3.8-23	1000-4000/70-275	1/4" NPTM/----	3/4" Barb
890703	30-135/114-511	400-1500/28-105	2" NPTM	2" NPTF
890710	15-100/57-378	300-1500/20-105	1" NPTM	1" NPTF
890711	5.0-50/19-189	1000-6000/70-414	1" NPTM	1" NPTF
890713	20-210/76-795	500-4000/35-275	2" NPTM	2" NPTF
890715	10-100/38-378	1000-8000/70-550	2" NPTM	2" NPTF
890721	15-100/57-378	100-600/7.0-41	2" NPTM	2" NPTF

* Rupture Disc Assembly (Used on models 1810, 1810K)

Pressure Gauges

Accurately monitors pump outlet pressure.

- Glycerine filled for consistent and accurate pressure readings.
- Sealed stainless steel case eliminates corrosion risk.



Model	PRESSURE RANGE		PORTS Inlet
	psi	bar	

BRASS MODELS (Brass Fitting and Bourdon Tube, 304 SS Case)

6086	0-1500	0-105	1/4" NPTM
6088	0-3000	0-210	1/4" NPTM

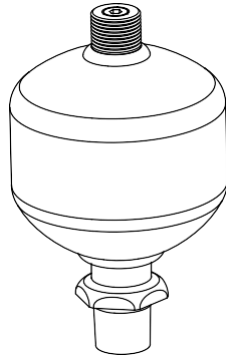
STAINLESS STEEL MODELS (316 SS Fitting and Bourdon Tube, 304 SS Case)

6085	0-1500	0-105	1/4" NPTM
6097	0-3000	0-210	1/4" NPTM
6087	0-6000	0-415	1/4" NPTM
6081	0-20000	0-1379	1/2" NPTM

Pulsation Dampeners

Used when a smooth output flow and pressure is required.

- Diaphragm materials match chemical compatibility requirements.
- Most models are field repairable and rechargeable.



Model	FLOW RANGE gpm/lpm	PRESSURE RANGE psi/bar	VOLUME Cubic Inches	PRECHARGE psi	PORTS Inlet
-------	-----------------------	---------------------------	------------------------	------------------	----------------

POLY-STEEL Rechargeable

6010	40/151	100-3000/7-210	45	450	1" NPTM
6011	25/95	100-7200/7-500	15	2000	1/2" NPTF
6012	70/265	100-1500/7-105	120	450	1 1/4" NPTM

POLY-STEEL Sealed

6026	15/57	300-600/20-41	10	Sealed - 250	1/2" NPTM
6028	15/57	600-1000/41-70	10	Sealed - 450	1/2" NPTM

316 STAINLESS STEEL Rechargeable

6013	40/151	100-2000/7-140	45	450	1" NPTM
6014	25/95	100-2400/7-170	20	450	3/4" NPTM
6015	70/265	100-1500/7-105	120	450	1 1/4" NPTM
6029*	15/57	100-3000/7-210	10	450	1/2" NPTM
6030*	15/57	100-3000/7-210	10	450	1/2" NPTM
6031	15/57	100-2400/7-168	10	450	1/2" NPTM

316 STAINLESS STEEL Rechargeable/Rebuildable

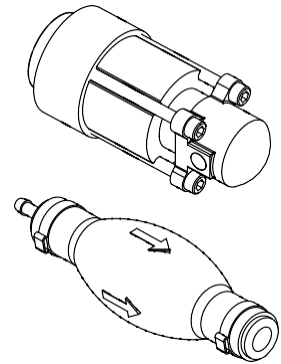
701501	15/57	100-4300/7-296	6	No precharge	1/2" NPTF
701502	25/95	100-3800/7-265	15	No precharge	1/2" NPTF
701503	75/284	100-3000/7-210	30	No precharge	1" NPTF
701507	25/95	100-7100/7-490	15	No precharge	1/2" NPTF
701520	15/57	100-8300/7-570	6	No precharge	1/2" NPTF
701521	15/57	100-4300/7-296	6	No precharge	1/2" NPTF
701522	25/95	100-3800/7-265	15	No precharge	1/2" NPTF
701523	75/284	100-3000/7-210	30	No precharge	1" NPTF
701527	25/95	100-7100/7-490	15	No precharge	1/2" NPTF
701535	15/57	100-8500/7-586	6	No precharge	1/2" NPTF
701537	25/95	100-7100/7-490	15	No precharge	1/2" NPTF
701541	15/57	100-4300/7-296	6	No precharge	1/2" NPTF
701542	25/95	100-3800/7-265	15	No precharge	1/2" NPTF
701543	75/284	100-3000/7-210	30	No precharge	1" NPTF
701550	100/378	100-3365/7-232	122	No precharge	1 1/2" NPTF
701555	100/378	100-6350/7-438	60	No precharge	1" NPTF
701557	320/1211	100-1275/7-88.0	214	No precharge	1 1/2" NPTF
701607	320/1211	100-1275/7-88.0	214	No precharge	1 1/2" NPTF
701610	25/95	100-10000/7-690	15	No precharge	1/2" NPTF

* Stainless steel lower body only

Pulse Pumps

High pressure injection downstream from the pump.

- Eliminates harsh chemicals going through pump.
- Simple field retrofit of existing pumps.



Model	FLOW RANGE gpm/lpm	PRESSURE RANGE psi/bar	PORTS Inlet/Discharge Manifold	
-------	-----------------------	---------------------------	-----------------------------------	--

PULSE PUMPS FOR PISTON PUMPS

6300	.26 quart/min 1 Liter/min	1000/70	1/4" NPTM	1/2" NPTM
6305	1 gallon/min 3 Liter/min	1000/70	3/8" NPTM	3/4" NPTM

Model	FLOW RANGE gph/lph	PRESSURE RANGE psi/bar	PORTS Inlet Discharge	
-------	-----------------------	---------------------------	--------------------------	--

PULSE PUMPS FOR PLUNGER AND PISTON PUMPS

6350	1.0-12/3.7-45.4	500-3000/35-210	1/4" Hose Barb	1/8" NPTF
------	-----------------	-----------------	----------------	-----------

Note: Contact Cat Pumps for selection of Adapter Assembly to fit your pump model.

Total Life Cycle Cost:

More and more users of pumping systems are making purchase decisions based on a systems Total Life Cycle Cost and not based on the systems initial cost. Pump, installation, energy use, downtime, operating expense and maintenance are all factors considered to determine a systems overall life cycle cost. The objective of life cycle costing is to evaluate and optimize product life costs yet satisfying the performance, safety, reliability, and maintainability of the system.

Cat Pumps is keenly aware of minimizing life cycle costs in both its pump and accessory component designs. A pumping systems ongoing performance is as good as its weakest component, that's why we rigorously test and evaluate our accessory components. Our mission is to provide the best system value by providing pumps and accessories that exceed your performance and reliability expectations so you can realize the lowest possible life cycle cost.



CAT PUMPS

1681 - 94TH LANE N.E. MINNEAPOLIS, MN 55449-4324
 PHONE (763) 780-5440 – FAX (763) 780-2958
 e-mail: techsupport@catpumps.com
 www.catpumps.com